

another muse

SS21 ANNOTHER [ARCHIVE]



A special collaboration with Lidia Masllorens.



another muse

SS21 ANNOTHER [ARCHIVE]

INSPIRED BY MUSES THAT INSPIRE.

Our SS21 collection is inspired by women who inspire and showcases a unique array of beautiful creations that pay homage to the modern muse, to yesterday's muse and to all the muses still waiting in the wings. The muses of old were the inspirational goddesses of the arts, science and literature. Who is your muse? Whose muse are you? In collaboration with artist Lidia Masllorens we are proud to bring you this exciting, eclectic, and magical collection.

We are proud to present Another Muse.

Ink drops dance on swirls of viscose silk, brushstrokes breathe new life to raw canvas fabrics and a face takes form on the body of Another Muse. Raw hessian corsets bring an element of surprise to classic organic cotton and linen oversize dresses with beautiful, gathered sleeve details. Hand-woven Khadi cotton and ecru raw linen shirts bring an element of the debonair to any occasion, while flighty, feminine fan-shaped tulle dresses create voluptuous volumes and layers. All of our garments are small works of art, designed to be experimented with, to be mixed and matched to suit your personality and to enhance the muse within. Built on sustainable principles we source fabrics close to our production base in Barcelona and strive to minimize our environmental impact wherever possible.

another muse










ALBA




MAKING OFF



PAULA


The image is a high-contrast, black and white abstract composition. It features a dark, almost black background with numerous diagonal streaks and lines of varying thickness and brightness, creating a sense of movement and depth. The streaks are most prominent on the right side, where they appear as bright, textured bands. The overall effect is reminiscent of a close-up of a textured surface or a high-speed photograph of a moving object.

Once upon a time the muses were ancient
Greek Goddesses of literature,
science and the arts. What muse are you?



This is the story of Another Muse,

// LOOK1 // DETAIL

A close-up photograph of a person's legs from the knees down, wearing white, short, ruffled shorts. The person is standing on a light-colored, sandy surface. The lighting is soft and natural, suggesting an outdoor setting like a beach. The text "of another way to dress and another way to be." is centered horizontally across the middle of the image, overlaid on the person's legs.

of another way to dress and another way to be.

// LOOK1 //





W024A // SMOCK DRESS // WHITE

// LOOK2 //



W010A // WISPY DRESS // CREAM
W011A // SOFT GAUZE DRESS // CREAM







// LOOK2 // DETAIL



// LOOK3 //



W012A // SOFT GAUZE TOP // CREAM
W020 // ECRU SKIRT // OFF WHITE

"I am my own muse. The subject I know best"
-Frida Kahlo.



// LOOK3 // DETAIL

// LOOK4 //



W019 // ECRU SHIRT // OFF WHITE
W021 // ECRU TROUSERS // OFF WHITE
W027 // RAW HESSIAN MINI CORSET // NATURAL
W028 // RAW HESSIAN GARTER // NATURAL





// LOOK4 //

// LOOK2 //



W019 // ECRU SHIRT // OFF WHITE
W021 // ECRU TROUSERS // OFF WHITE
W027 // RAW HESSIAN MINI CORSET // NATURAL
W028 // RAW HESSIAN GARTER // NATURAL





// LOOK4 // DETAIL

// LOOK5 //





W007 // QUILTING DRESS // OFF WHITE
W032A // VENEER TOP // NUDE



// LOOK5 // DETAIL
W007 // QUILTING DRESS // OFF WHITE
W032A // VENEER TOP // NUDE



// LOOK6 // DETAIL
W030A // VENEER SHIRT // NUDE
W008 // QUILTING SKIRT // OFF WHITE

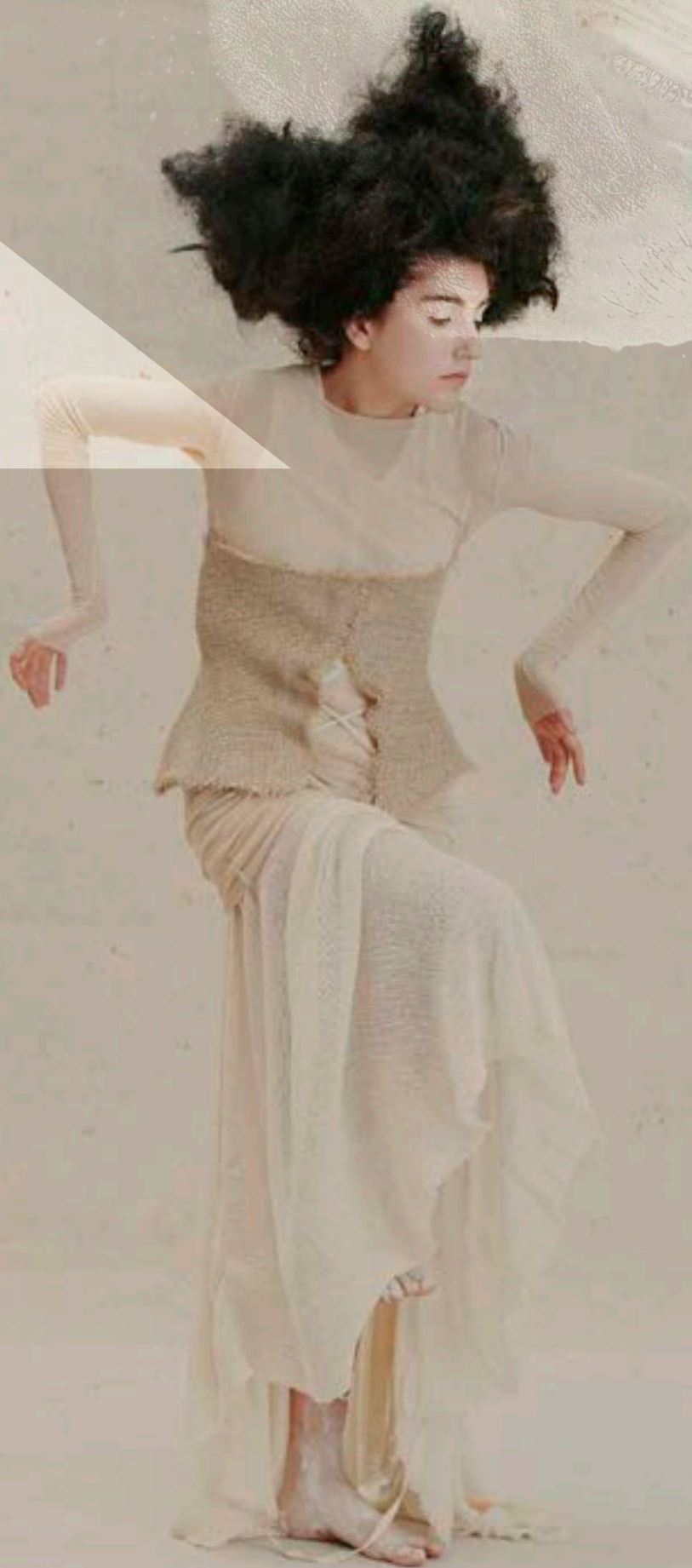


// LOOK6 //

W030A // VENEER SHIRT // NUDE
W008 // QUILTING SKIRT // OFF WHITE



// LOOK7 //



W031A // VENEER LONG TOP // NUDE
W026 // RAW HESSIAN CORSET // NATURAL
W011A // SOFT GAUZE DRESS // CREAM





// LOOK7 // DETAIL


"Oh! For a muse of fire that would ascend the brightest
heaven of invention." -William Shakespeare.

// LOOK8 //





W029A // VENEER DRESS // NUDE



The artist's muse, the scientist's muse, the writer's muse...



// LOOK8 // DETAIL

// LOOK9 //



W005 // QUILTING LONG KIMONO // OFF WHITE
W002 // BRUSHSTROKE DRESS // BLACK & OFF WHITE



// LOOK10 //





W002 // BRUSHSTROKE DRESS // BLACK & OFF WHITE



// LOOK10 // DETAIL



// LOOK11 //





W003 // BRUSHSTROKE JUMPSUIT // BLACK & OFF WHITE





// LOOK11 //
W024B // SMOCK DRESS // BLACK
W003 // BRUSHSTROKE JUMPSUIT // BLACK & OFF WHITE

// LOOK12 //





W001 // BRUSHSTROKE COAT // BLACK & OFF WHITE
W022 // CHARCOAL SHIRT // BLACK
W004 // BRUSHSTROKE TROUSERS // BLACK & OFF WHITE





// LOOK12 // DETAIL

// LOOK13 //



W030 // VENEER SHIRT // BLACK
W004 // BRUSHSTROKE TROUSERS // BLACK & OFF WHITE



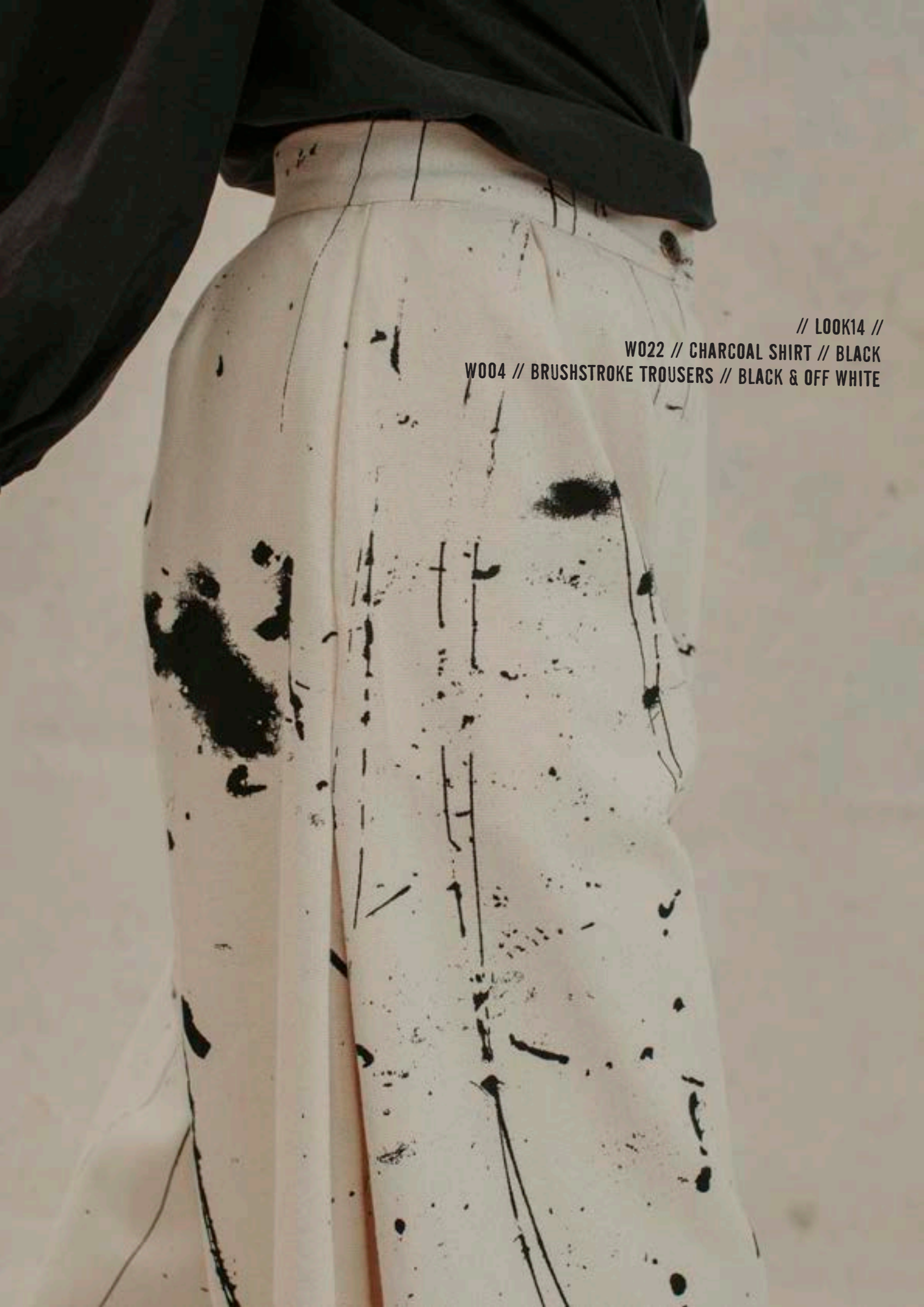
// LOOK14 //





W022 // CHARCOAL SHIRT // BLACK
W004 // BRUSHSTROKE TROUSERS // BLACK & OFF WHITE





// LOOK14 //

W022 // CHARCOAL SHIRT // BLACK

W004 // BRUSHSTROKE TROUSERS // BLACK & OFF WHITE

// LOOK15 //





**W015 // INKDROP TOP // BLACK & CREAM
W020 // ECRU SKIRT // OFF WHITE**

"Nature's my muse and it's been my passion."
-Franz Lanting.



// LOOK15 // DETAIL



// LOOK16 //



W014 // INKDROP DRESS // BLACK & CREAM

// LOOK17 //





W010B // WISPY DRESS // BLACK
W014 // INKDROP DRESS // BLACK & CREAM



// LOOK17 // DETAIL



// LOOK18 //



W018 // BLACK INK TOP // BLACK
W016 // INKDROP SKIRT // BLACK & CREAM





// LOOK18 //

W018 // BLACK INK TOP // BLACK

W016 // INKDROP SKIRT // BLACK & CREAM



// LOOK19 //





W009 // MUSE DRESS // BLACK & OFF WHITE

// LOOK20 //





W013 // INKDROP KIMONO // BLACK & CREAM
W009 // MUSE DRESS // BLACK & OFF WHITE

// LOOK21 //





W031B // VENEER LONG TOP // BLACK
W010A // WISPY DRESS // CREAM

// LOOK22 //



W025A // SMOCK TOP // WHITE
W023 // CHARCOAL SKIRT // BLACK








// LOOK22 // DETAIL



// LOOK23 //



W006 // QUILTING KIMONO // OFF WHITE
W032B // VENEER TOP // BLACK
W023 // CHARCOAL SKIRT // BLACK

A close-up photograph of a dog's head, showing its eye and fur texture. The dog is looking towards the camera. The image is slightly out of focus, emphasizing the texture of the fur and the dog's eye. A quote is overlaid on the image.

“Sing in me, Muse, and through me tell the story (...)”
The Odyssey, Homer.



// LOOK23 // DETAIL



// LOOK24 //



W029B // VENEER DRESS // BLACK



// LOOK25 //

W017 // BLACK INK DRESS // BLACK





// LOOK25 // DETAIL



// LOOK26 //





W032B // VENEER TOP // BLACK
W023 // CHARCOAL SKIRT // BLACK



// LOOK26 // DETAIL



// LOOK27 //



W024B // SMOCK DRESS // BLACK






// LOOK27 //
W024B // SMOCK DRESS // BLACK



// LOOK27 // DETAIL



A black and white photograph showing a person's legs from the knees down, wearing dark, possibly black, trousers. The person is standing on a light-colored, textured surface, likely concrete or stone. In the foreground, there is a large, dark, textured area that appears to be a shadow or a piece of dark material. The lighting is dramatic, with strong shadows and highlights.

Which modern muse are you? Where there is
inspiration there is always Another Muse

1



X



BUTTONS

3



X



5



VENEER TOP

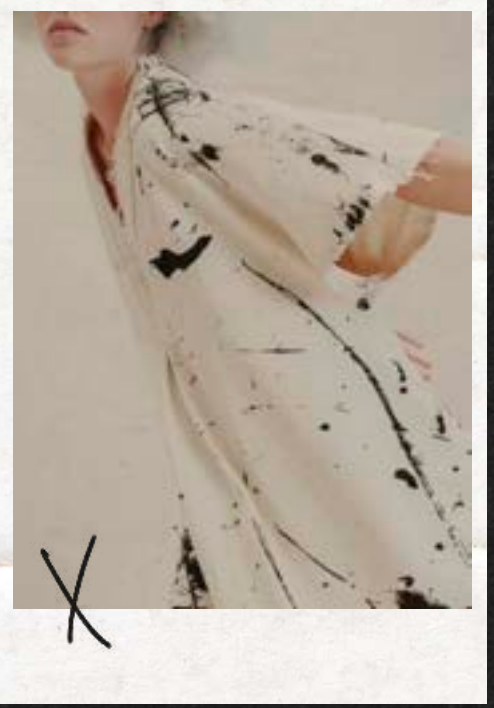
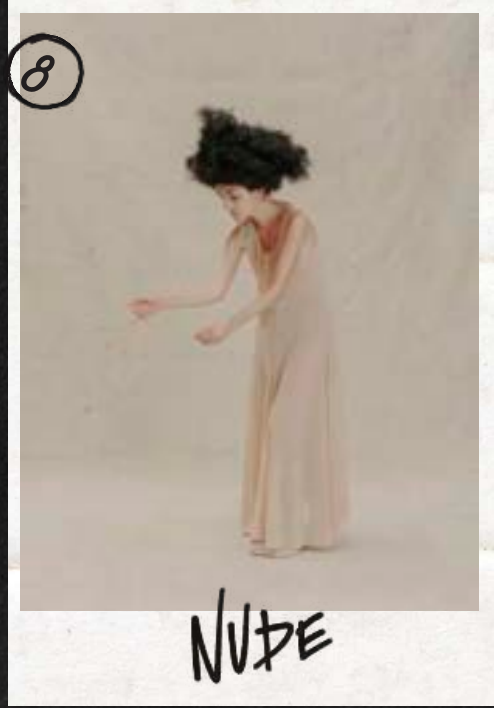


X









13



15



ECRU

17





CHARCOAL



X



INK TOP

19



MUSE DRESS



X

21



X



WISPY

23



QUILTING



X

20



INKDROP



X

22



X



X

24



BLACK



X

25



INK DRESS

27



SMOCK



X

26



X



VENEER TOP







"Women are our most miraculous muse, an enchanted
intangibility that encourages all art." - Ceelo Green.

Guest Artist - Lidia Masllorens
Art Direction & Stylist - Sylvia Bonet
Photography - Leo Tornev
Graphic Design - Petit Comité
Copy - Vicky Collier
Muses - Paula Losada & Alba Puigvert
Hair & Make Up - Estrella Elorduy

another muse

SS21 ANNOTHER [ARCHIVE]

